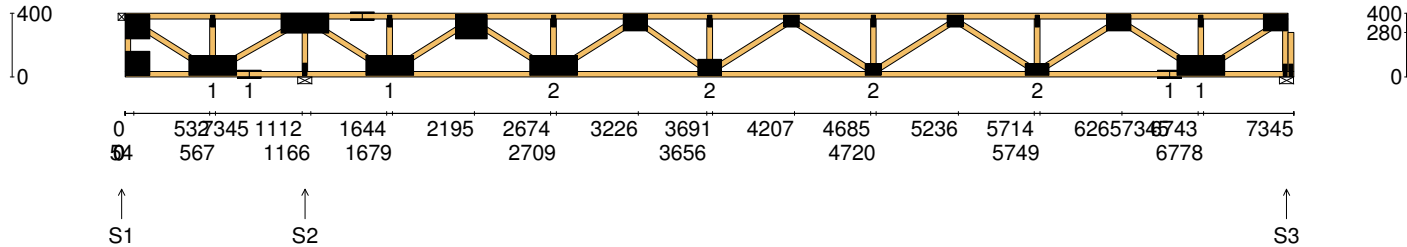


Client: D'ANDREA	Trusstech SA Pty Ltd 16 High St., Dry Creek, SA 5094	Job No: TT09728
Site: 541 ANZAC GLENELG HWY EAST GLENELG SA 5045 AUS		Weight: 48.34 kg
Ref: DWELLING 2	Joist Name: FT1 Type: SJ 400 Joists: FT1, FT2, FT3, FT4	Total Weight: 193.35 kg
		Laminations: 1



TIMBER / PLATES

Member	Size	Plating	Restraint
BC1	90x35-MGP10 H0 ADS	JD5	600
LEW1	90x35-MGP10 H0 ADS	JD5	
TC1	90x35-MGP10 H0 ADS	JD5	300
W1	90x35-MGP10 H0 ADS	JD5	
W2	90x35-MGP10 H0 ADS	JD5	
W3	90x35-MGP10 H0 ADS	JD5	
BC2	90x35-MGP10 H0 ADS	JD5	600
W4	90x35-MGP10 H0 ADS	JD5	
W5	90x35-MGP10 H0 ADS	JD5	
TC2	90x35-MGP10 H0 ADS	JD5	300
W6	90x35-MGP10 H0 ADS	JD5	
W7	90x35-MGP10 H0 ADS	JD5	
W8	90x35-MGP10 H0 ADS	JD5	


- 17 more members were not shown -

Vertical Reactions at Supports

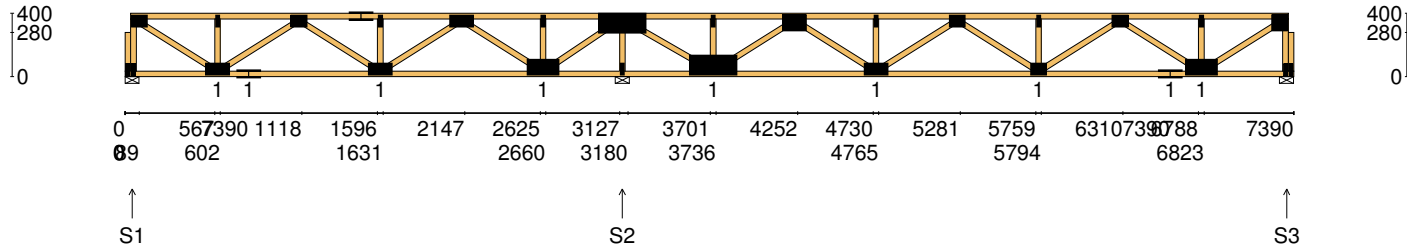
	S1	S2	S3
1.35DL (kN)	-0.83	2.41	0.84
1.2DL + 1.5LL (kN)	-4.22	12.04	4.14

Joint	Nail Plate	Joint	Nail Plate
T1	150x150-MN	T8	100x150-MN
BL1	150x150-MN	B6	100x150-MN
B1	125x300-MN	T9	25x75-MN
T2	25x75-MN	T10	75x100-MN
B2	75x150-MN	B7	75x100-MN
T3	125x300-MN	T11	25x75-MN
B3	25x75-MN	T12	75x100-MN
T4	75x150-MN	B8	75x150-MN
B4	125x300-MN	T13	25x75-MN
T5	25x75-MN	T14	100x150-MN
T6	150x200-MN	B9	75x150-MN
B5	125x300-MN	B10	125x300-MN
T7	25x75-MN	BR1-1	25x75-MN

- 3 more nail plates were not shown -

Span: 7345	Floor Material: Particle (15.4 kg/m²)	Application: General Areas	All dimensions in millimetres. This drawing should be read in conjunction with Multinail Technical sheets. Wall plates must be placed at supports only.	Marc Houldsworth (TN-016-020)	
Overhang: 0/0	Floor Covering: Std Carpet + Underlay (8 kg/m²)	Live Load: 1.5 kPa		Ver: Floor 1.9.3	
Spacing: 600	Ceiling Material: Plaster 10mm Supa Span (8.2 kg/m²)	Point Load: 1.8 kN		Date: 28/05/2018	
Quantity: 4	Ceiling Fixing: Metal direct @ 600c	Design: AS 1720.1-2010		Page: 1 of 20	

Client: D'ANDREA	Trusstech SA Pty Ltd 16 High St., Dry Creek, SA 5094 Joist Name: FT2 Type: SJ 400 Joists: FT5	Job No: TT09728
Site: 541 ANZAC GLENELG HWY EAST GLENELG SA 5045 AUS		Weight: 46.56 kg
Ref: DWELLING 2		Total Weight: 46.56 kg
		Laminations: 1



TIMBER / PLATES

Member	Size	Plating	Restraint
BC1	90x35-MGP10 H0 ADS	JD5	600
LBlock1	90x35-MGP10 H0 ADS	JD5	
LEW1	90x35-MGP10 H0 ADS	JD5	
TC1	90x35-MGP10 H0 ADS	JD5	300
W1	90x35-MGP10 H0 ADS	JD5	
W2	90x35-MGP10 H0 ADS	JD5	
W3	90x35-MGP10 H0 ADS	JD5	
BC2	90x35-MGP10 H0 ADS	JD5	600
W4	90x35-MGP10 H0 ADS	JD5	
TC2	90x35-MGP10 H0 ADS	JD5	300
W5	90x35-MGP10 H0 ADS	JD5	
W6	90x35-MGP10 H0 ADS	JD5	
W7	90x35-MGP10 H0 ADS	JD5	


- 18 more members were not shown -

Vertical Reactions at Supports

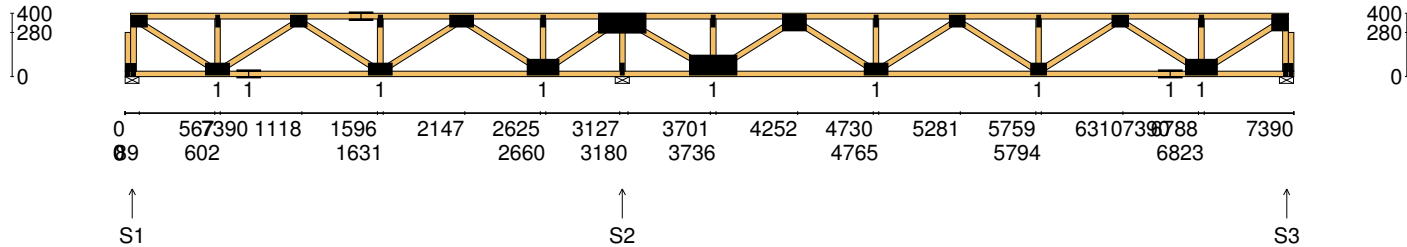
	S1	S2	S3
1.35DL (kN)	0.34	1.50	0.57
1.2DL + 1.5LL (kN)	1.67	7.50	2.81

Joint	Nail Plate	Joint	Nail Plate
BL1-1	25x75-MN	T8	125x300-MN
T1	75x100-MN	B5	25x75-MN
BL1	25x75-MN	B6	125x300-MN
B1	75x150-MN	T9	25x75-MN
T2	25x75-MN	T10	100x150-MN
B2	75x150-MN	B7	75x150-MN
T3	75x100-MN	T11	25x75-MN
T4	75x150-MN	T12	75x100-MN
B3	75x150-MN	B8	75x100-MN
T5	25x75-MN	T13	25x75-MN
T6	75x150-MN	T14	75x100-MN
B4	100x200-MN	B9	75x150-MN
T7	25x75-MN	BR1-1	25x75-MN

- 4 more nail plates were not shown -

Span: 7390	Floor Material: Particle (15.4 kg/m²)	Application: General Areas	All dimensions in millimetres. This drawing should be read in conjunction with Multinail Technical sheets. Wall plates must be placed at supports only.	Marc Houldsworth (TN-016-020)	
Overhang: 0/0	Floor Covering: Std Carpet + Underlay (8 kg/m²)	Live Load: 1.5 kPa		Ver: Floor 1.9.3	
Spacing: 600	Ceiling Material: Plaster 10mm Supa Span (8.2 kg/m²)	Point Load: 1.8 kN		Date: 28/05/2018	
Quantity: 1	Ceiling Fixing: Metal direct @ 600c	Design: AS 1720.1-2010		Page: 2 of 20	

Client: D'ANDREA	Trusstech SA Pty Ltd 16 High St., Dry Creek, SA 5094 Joist Name: FT2 Type: SJ 400 Joists: FT6	Job No: TT09728
Site: 541 ANZAC GLENELG HWY EAST GLENELG SA 5045 AUS		Weight: 46.56 kg
Ref: DWELLING 2		Total Weight: 46.56 kg
		Laminations: 1



TIMBER / PLATES

Member	Size	Plating	Restraint
BC1	90x35-MGP10 H0 ADS	JD5	600
LBlock1	90x35-MGP10 H0 ADS	JD5	
LEW1	90x35-MGP10 H0 ADS	JD5	
TC1	90x35-MGP10 H0 ADS	JD5	300
W1	90x35-MGP10 H0 ADS	JD5	
W2	90x35-MGP10 H0 ADS	JD5	
W3	90x35-MGP10 H0 ADS	JD5	
BC2	90x35-MGP10 H0 ADS	JD5	600
W4	90x35-MGP10 H0 ADS	JD5	
TC2	90x35-MGP10 H0 ADS	JD5	300
W5	90x35-MGP10 H0 ADS	JD5	
W6	90x35-MGP10 H0 ADS	JD5	
W7	90x35-MGP10 H0 ADS	JD5	


- 18 more members were not shown -

Vertical Reactions at Supports

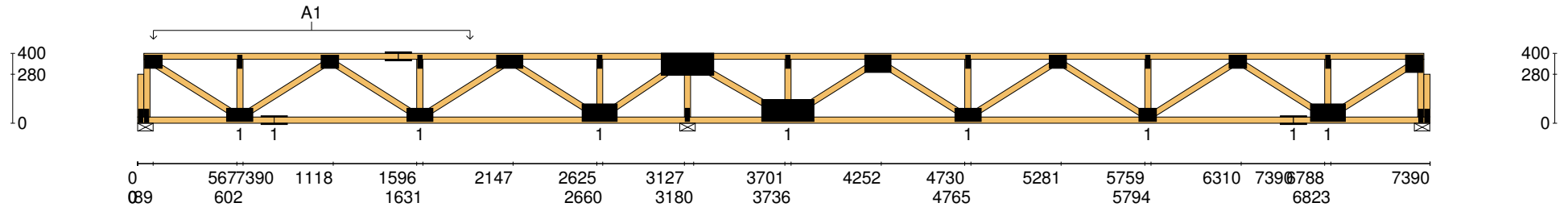
	S1	S2	S3
1.35DL (kN)	0.53	1.61	0.56
1.2DL + 1.5LL (kN)	1.84	7.60	2.80

Joint	Nail Plate	Joint	Nail Plate
BL1-1	25x75-MN	T8	125x300-MN
T1	75x100-MN	B5	25x75-MN
BL1	25x75-MN	B6	125x300-MN
B1	75x150-MN	T9	25x75-MN
T2	25x75-MN	T10	100x150-MN
B2	75x150-MN	B7	75x150-MN
T3	75x100-MN	T11	25x75-MN
T4	75x150-MN	T12	75x100-MN
B3	75x150-MN	B8	75x100-MN
T5	25x75-MN	T13	25x75-MN
T6	75x150-MN	T14	75x100-MN
B4	100x200-MN	B9	75x150-MN
T7	25x75-MN	BR1-1	25x75-MN


- 4 more nail plates were not shown -

Span: 7390	Floor Material: Particle (15.4 kg/m²)	Application: General Areas	All dimensions in millimetres. This drawing should be read in conjunction with Multinail Technical sheets. Wall plates must be placed at supports only.	Marc Houldsworth (TN-016-020)	
Overhang: 0/0	Floor Covering: Std Carpet + Underlay (8 kg/m²)	Live Load: 1.5 kPa		Ver:	Floor 1.9.3
Spacing: 600	Ceiling Material: Plaster 10mm Supa Span (8.2 kg/m²)	Point Load: 1.8 kN		Date:	28/05/2018
Quantity: 1	Ceiling Fixing: Metal direct @ 600c	Design: AS 1720.1-2010		Page:	3 of 20

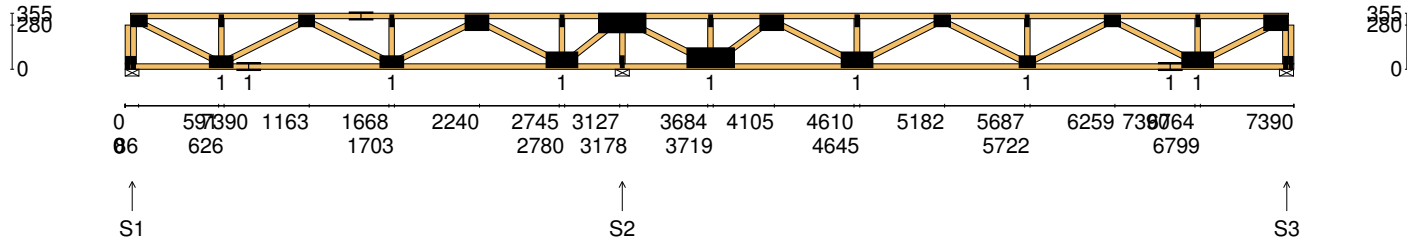
Client: D'ANDREA	Trusstech SA Pty Ltd 16 High St., Dry Creek, SA 5094 Joist Name: FT2 Type: SJ 400 Joists: FT6	Job No:	TT09728
Site: 541 ANZAC GLENELG HWY EAST GLENELG SA 5045 AUS		Weight:	46.56 kg
Ref: DWELLING 2		Total Weight:	46.56 kg
		Laminations:	1



User Def. Load	A1 43.50 kg/m ²
Applied Load	
DL (kN)	
LL (kN)	
WL Up (kN)	
WL Dn (kN)	

Span: 7390	Floor Material: Particle (15.4 kg/m²)	Application: General Areas	All dimensions in millimetres. This drawing should be read in conjunction with Multinail Technical sheets. Wall plates must be placed at supports only.	Marc Houldsworth (TN-016-020)
Overhang: 0/0	Floor Covering: Std Carpet + Underlay (8 kg/m²)	Live Load: 1.5 kPa		Ver: Floor 1.9.3
Spacing: 600	Ceiling Material: Plaster 10mm Supa Span (8.2 kg/m²)	Point Load: 1.8 kN		Date: 28/05/2018
Quantity: 1	Ceiling Fixing: Metal direct @ 600c	Design: AS 1720.1-2010		Page: 4 of 20

Client: D'ANDREA	Trusstech SA Pty Ltd 16 High St., Dry Creek, SA 5094 Joist Name: FT3 Type: SJ 355 Joists: FT7	Job No: TT09728
Site: 541 ANZAC GLENELG HWY EAST GLENELG SA 5045 AUS		Weight: 45.67 kg
Ref: DWELLING 2		Total Weight: 45.67 kg
		Laminations: 1



TIMBER / PLATES

Member	Size	Plating	Restraint
BC1	90x35-MGP10 H0 ADS	JD5	600
LBlock1	90x35-MGP10 H0 ADS	JD5	
LEW1	90x35-MGP10 H0 ADS	JD5	
TC1	90x35-MGP10 H0 ADS	JD5	300
W1	90x35-MGP10 H0 ADS	JD5	
W2	90x35-MGP10 H0 ADS	JD5	
W3	90x35-MGP10 H0 ADS	JD5	
BC2	90x35-MGP10 H0 ADS	JD5	600
W4	90x35-MGP10 H0 ADS	JD5	
TC2	90x35-MGP10 H0 ADS	JD5	300
W5	90x35-MGP10 H0 ADS	JD5	
W6	90x35-MGP10 H0 ADS	JD5	
W7	90x35-MGP10 H0 ADS	JD5	


- 18 more members were not shown -

Vertical Reactions at Supports

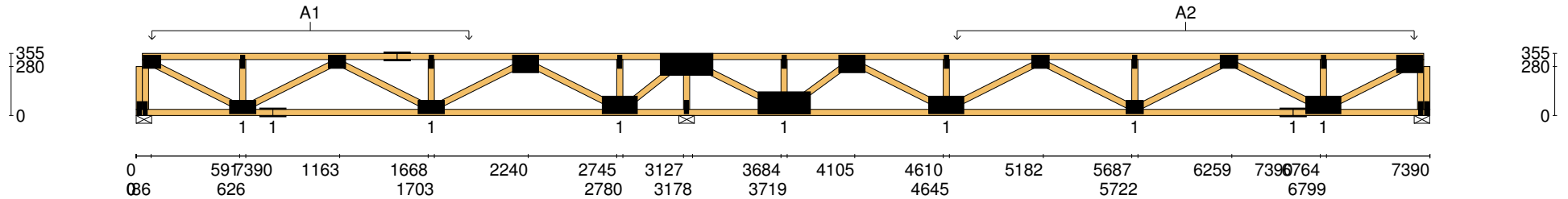
	S1	S2	S3
1.35DL (kN)	0.48	1.81	0.81
1.2DL + 1.5LL (kN)	1.79	7.80	3.01

Joint	Nail Plate	Joint	Nail Plate
BL1-1	25x75-MN	T8	125x300-MN
T1	75x100-MN	B5	25x75-MN
BL1	25x75-MN	B6	125x300-MN
B1	75x150-MN	T9	25x75-MN
T2	25x75-MN	T10	100x150-MN
B2	75x150-MN	B7	100x200-MN
T3	75x100-MN	T11	25x75-MN
T4	75x150-MN	T12	75x100-MN
B3	75x150-MN	B8	75x100-MN
T5	25x75-MN	T13	25x75-MN
T6	100x150-MN	T14	75x100-MN
B4	100x200-MN	B9	75x150-MN
T7	25x75-MN	BR1-1	25x75-MN

- 4 more nail plates were not shown -

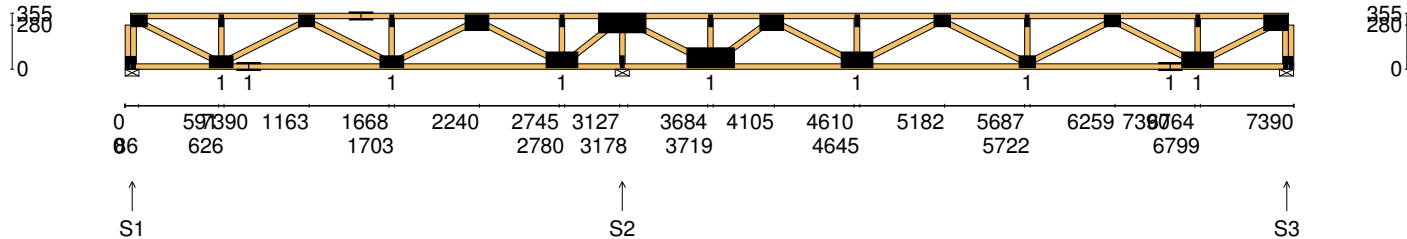
Span: 7390	Floor Material: Particle (15.4 kg/m²)	Application: General Areas	All dimensions in millimetres. This drawing should be read in conjunction with Multinail Technical sheets. Wall plates must be placed at supports only.	Marc Houldsworth (TN-016-020)	
Overhang: 0/0	Floor Covering: Std Carpet + Underlay (8 kg/m²)	Live Load: 1.5 kPa		Ver: Floor 1.9.3	
Spacing: 600	Ceiling Material: Plaster 10mm Supa Span (8.2 kg/m²)	Point Load: 1.8 kN		Date: 28/05/2018	
Quantity: 1	Ceiling Fixing: Metal direct @ 600c	Design: AS 1720.1-2010		Page: 5 of 20	

Client: D'ANDREA	Trusstech SA Pty Ltd 16 High St., Dry Creek, SA 5094	Job No: TT09728
Site: 541 ANZAC GLENELG HWY EAST GLENELG SA 5045 AUS		Weight: 45.67 kg
Ref: DWELLING 2	Joist Name: FT3 Type: SJ 355 Joists: FT7	Total Weight: 45.67 kg
		Laminations: 1



User Def. Load		A1 43.50 kg/m ²	A2 43.50 kg/m ²
Applied Load			
DL	(kN)		
LL	(kN)		
WL Up	(kN)		
WL Dn	(kN)		
Span:	7390	Floor Material: Particle (15.4 kg/m²)	Application: General Areas
Overhang:	0/0	Floor Covering: Std Carpet + Underlay (8 kg/m²)	Live Load: 1.5 kPa
Spacing:	600	Ceiling Material: Plaster 10mm Supa Span (8.2 kg/m²)	Point Load: 1.8 kN
Quantity:	1	Ceiling Fixing: Metal direct @ 600c	Design: AS 1720.1-2010
<div> <div>All dimensions in millimetres. This drawing should be read in conjunction with Multinail Technical sheets. Wall plates must be placed at supports only.</div> <div> </div> </div>			
		Marc Houldsworth (TN-016-020)	
		Ver:	Floor 1.9.3
		Date:	28/05/2018
		Page:	6 of 20

Client: D'ANDREA	Trusstech SA Pty Ltd 16 High St., Dry Creek, SA 5094	Job No: TT09728
Site: 541 ANZAC GLENELG HWY EAST GLENELG SA 5045 AUS		Weight: 45.67 kg
Ref: DWELLING 2	Joist Name: FT3 Type: SJ 355 Joists: FT8	Total Weight: 45.67 kg
		Laminations: 1



TIMBER / PLATES

Member	Size	Plating	Restraint
BC1	90x35-MGP10 H0 ADS	JD5	600
LBlock1	90x35-MGP10 H0 ADS	JD5	
LEW1	90x35-MGP10 H0 ADS	JD5	
TC1	90x35-MGP10 H0 ADS	JD5	300
W1	90x35-MGP10 H0 ADS	JD5	
W2	90x35-MGP10 H0 ADS	JD5	
W3	90x35-MGP10 H0 ADS	JD5	
BC2	90x35-MGP10 H0 ADS	JD5	600
W4	90x35-MGP10 H0 ADS	JD5	
TC2	90x35-MGP10 H0 ADS	JD5	300
W5	90x35-MGP10 H0 ADS	JD5	
W6	90x35-MGP10 H0 ADS	JD5	
W7	90x35-MGP10 H0 ADS	JD5	


- 18 more members were not shown -

Vertical Reactions at Supports

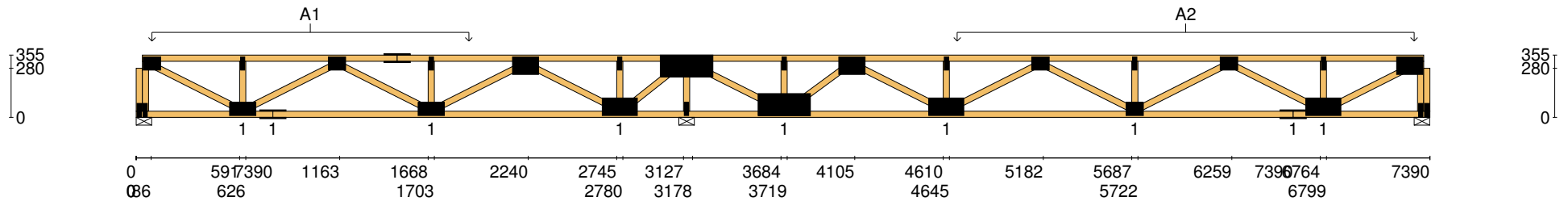
	S1	S2	S3
1.35DL (kN)	0.48	1.81	0.81
1.2DL + 1.5LL (kN)	1.79	7.80	3.01

Joint	Nail Plate	Joint	Nail Plate
BL1-1	25x75-MN	T8	125x300-MN
T1	75x100-MN	B5	25x75-MN
BL1	25x75-MN	B6	125x300-MN
B1	75x150-MN	T9	25x75-MN
T2	25x75-MN	T10	100x150-MN
B2	75x150-MN	B7	100x200-MN
T3	75x100-MN	T11	25x75-MN
T4	75x150-MN	T12	75x100-MN
B3	75x150-MN	B8	75x100-MN
T5	25x75-MN	T13	25x75-MN
T6	100x150-MN	T14	75x100-MN
B4	100x200-MN	B9	75x150-MN
T7	25x75-MN	BR1-1	25x75-MN

- 4 more nail plates were not shown -

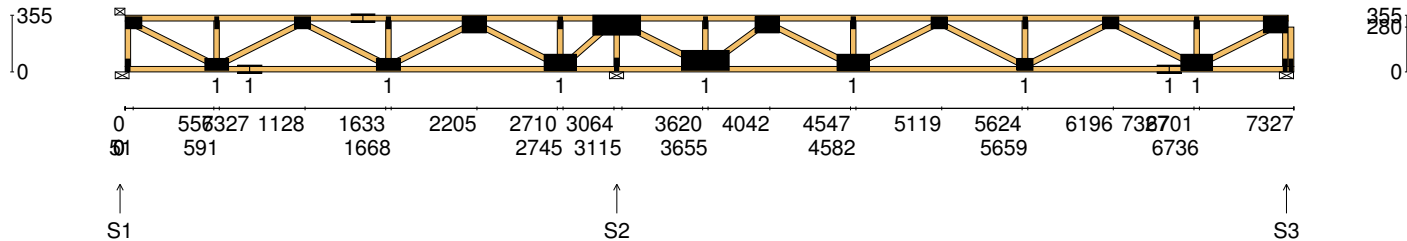
Span: 7390	Floor Material: Particle (15.4 kg/m²)	Application: General Areas	All dimensions in millimetres. This drawing should be read in conjunction with Multinail Technical sheets. Wall plates must be placed at supports only.	Marc Houldsworth (TN-016-020)
Overhang: 0/0	Floor Covering: Std Carpet + Underlay (8 kg/m²)	Live Load: 1.5 kPa		Ver: Floor 1.9.3
Spacing: 600	Ceiling Material: Plaster 10mm Supa Span (8.2 kg/m²)	Point Load: 1.8 kN		Date: 28/05/2018
Quantity: 1	Ceiling Fixing: Metal direct @ 600c	Design: AS 1720.1-2010		Page: 7 of 20

Client: D'ANDREA	Trusstech SA Pty Ltd 16 High St., Dry Creek, SA 5094	Job No: TT09728
Site: 541 ANZAC GLENELG HWY EAST GLENELG SA 5045 AUS		Weight: 45.67 kg
Ref: DWELLING 2	Joist Name: FT3 Type: SJ 355 Joists: FT8	Total Weight: 45.67 kg
		Laminations: 1



User Def. Load		A1	A2
		43.50 kg/m ²	43.50 kg/m ²
Applied Load			
DL	(kN)		
LL	(kN)		
WL Up	(kN)		
WL Dn	(kN)		
Span:	7390	Floor Material: Particle (15.4 kg/m²)	Application: General Areas
Overhang:	0/0	Floor Covering: Std Carpet + Underlay (8 kg/m²)	Live Load: 1.5 kPa
Spacing:	600	Ceiling Material: Plaster 10mm Supa Span (8.2 kg/m²)	Point Load: 1.8 kN
Quantity:	1	Ceiling Fixing: Metal direct @ 600c	Design: AS 1720.1-2010
<div> <div> All dimensions in millimetres. This drawing should be read in conjunction with Multinail Technical sheets. Wall plates must be placed at supports only. </div> <div> </div> </div>			
		Marc Houldsworth (TN-016-020)	
		Ver:	Floor 1.9.3
		Date:	28/05/2018
		Page:	8 of 20

Client: D'ANDREA	Trusstech SA Pty Ltd 16 High St., Dry Creek, SA 5094	Job No: TT09728
Site: 541 ANZAC GLENELG HWY EAST GLENELG SA 5045 AUS		Weight: 45.07 kg
Ref: DWELLING 2	Joist Name: FT4 Type: SJ 355 Joists: FT9	Total Weight: 45.07 kg
		Laminations: 1



TIMBER / PLATES

Member	Size	Plating	Restraint
BC1	90x35-MGP10 H0 ADS	JD5	600
LEW1	90x35-MGP10 H0 ADS	JD5	
TC1	90x35-MGP10 H0 ADS	JD5	300
W1	90x35-MGP10 H0 ADS	JD5	
W2	90x35-MGP10 H0 ADS	JD5	
W3	90x35-MGP10 H0 ADS	JD5	
BC2	90x35-MGP10 H0 ADS	JD5	600
W4	90x35-MGP10 H0 ADS	JD5	
TC2	90x35-MGP10 H0 ADS	JD5	300
W5	90x35-MGP10 H0 ADS	JD5	
W6	90x35-MGP10 H0 ADS	JD5	
W7	90x35-MGP10 H0 ADS	JD5	
W8	90x35-MGP10 H0 ADS	JD5	


- 17 more members were not shown -

Vertical Reactions at Supports

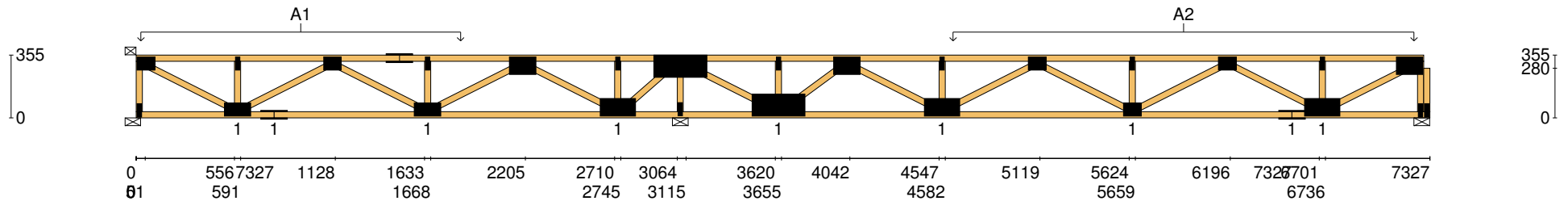
	S1	S2	S3
1.35DL (kN)	0.48	1.81	0.81
1.2DL + 1.5LL (kN)	1.76	7.77	3.01

Joint	Nail Plate	Joint	Nail Plate
T1	75x100-MN	B5	25x75-MN
BL1	25x75-MN	B6	125x300-MN
B1	75x150-MN	T9	25x75-MN
T2	25x75-MN	T10	100x150-MN
B2	75x150-MN	B7	100x200-MN
T3	75x100-MN	T11	25x75-MN
T4	75x150-MN	T12	75x100-MN
B3	75x150-MN	B8	75x100-MN
T5	25x75-MN	T13	25x75-MN
T6	100x150-MN	T14	75x100-MN
B4	100x200-MN	B9	75x150-MN
T7	25x75-MN	B10	100x200-MN
T8	125x300-MN	BR1-1	25x75-MN

- 3 more nail plates were not shown -


Span: 7327	Floor Material: Particle (15.4 kg/m²)	Application: General Areas	All dimensions in millimetres. This drawing should be read in conjunction with Multinail Technical sheets. Wall plates must be placed at supports only.	Marc Houldsworth (TN-016-020)
Overhang: 0/0	Floor Covering: Std Carpet + Underlay (8 kg/m²)	Live Load: 1.5 kPa		Ver: Floor 1.9.3
Spacing: 600	Ceiling Material: Plaster 10mm Supa Span (8.2 kg/m²)	Point Load: 1.8 kN		Date: 28/05/2018
Quantity: 1	Ceiling Fixing: Metal direct @ 600c	Design: AS 1720.1-2010		Page: 9 of 20

Client: D'ANDREA	Trusstech SA Pty Ltd 16 High St., Dry Creek, SA 5094	Job No: TT09728
Site: 541 ANZAC GLENELG HWY EAST GLENELG SA 5045 AUS		Weight: 45.07 kg
Ref: DWELLING 2	Joist Name: FT4 Type: SJ 355 Joists: FT9	Total Weight: 45.07 kg
		Laminations: 1

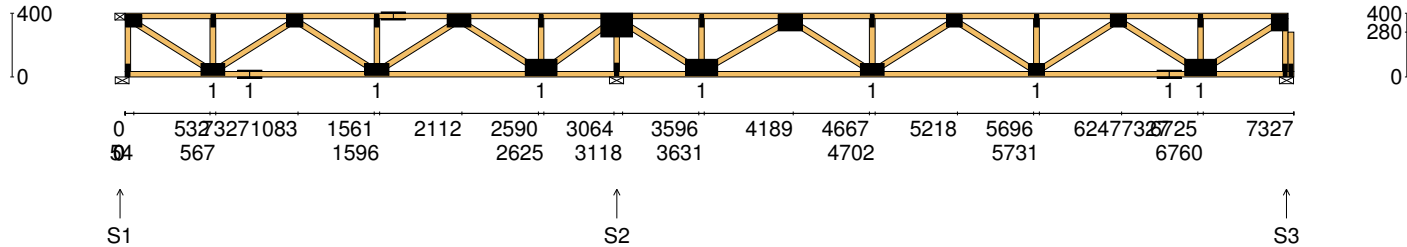


User Def. Load	A1	A2
	43.50 kg/m ²	43.50 kg/m ²

Applied Load	
DL (kN)	
LL (kN)	
WL Up (kN)	
WL Dn (kN)	

Span: 7327	Floor Material: Particle (15.4 kg/m²)	Application: General Areas	All dimensions in millimetres. This drawing should be read in conjunction with Multinail Technical sheets. Wall plates must be placed at supports only.	Marc Houldsworth (TN-016-020)
Overhang: 0/0	Floor Covering: Std Carpet + Underlay (8 kg/m²)	Live Load: 1.5 kPa		Ver: Floor 1.9.3
Spacing: 600	Ceiling Material: Plaster 10mm Supa Span (8.2 kg/m²)	Point Load: 1.8 kN		Date: 28/05/2018
Quantity: 1	Ceiling Fixing: Metal direct @ 600c	Design: AS 1720.1-2010		Page: 10 of 20

Client: D'ANDREA	Trusstech SA Pty Ltd 16 High St., Dry Creek, SA 5094 Joist Name: FT5 Type: SJ 400 Joists: FT10, FT11, FT13	Job No: TT09728
Site: 541 ANZAC GLENELG HWY EAST GLENELG SA 5045 AUS		Weight: 45.50 kg
Ref: DWELLING 2		Total Weight: 136.49 kg
		Laminations: 1



TIMBER / PLATES

Member	Size	Plating	Restraint
BC1	90x35-MGP10 H0 ADS	JD5	600
LEW1	90x35-MGP10 H0 ADS	JD5	
TC1	90x35-MGP10 H0 ADS	JD5	300
W1	90x35-MGP10 H0 ADS	JD5	
W2	90x35-MGP10 H0 ADS	JD5	
W3	90x35-MGP10 H0 ADS	JD5	
BC2	90x35-MGP10 H0 ADS	JD5	600
W4	90x35-MGP10 H0 ADS	JD5	
W5	90x35-MGP10 H0 ADS	JD5	
W6	90x35-MGP10 H0 ADS	JD5	
TC2	90x35-MGP10 H0 ADS	JD5	300
W7	90x35-MGP10 H0 ADS	JD5	
W8	90x35-MGP10 H0 ADS	JD5	


- 17 more members were not shown -

Vertical Reactions at Supports

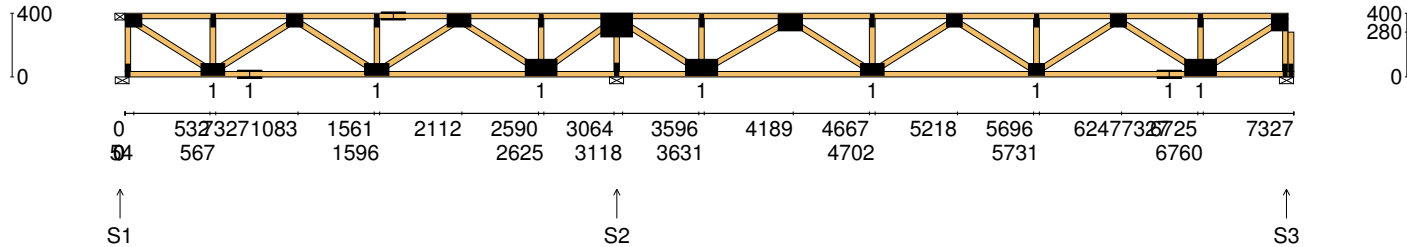
	S1	S2	S3
1.35DL (kN)	0.33	1.50	0.57
1.2DL + 1.5LL (kN)	1.64	7.48	2.81

Joint	Nail Plate	Joint	Nail Plate
T1	75x100-MN	B5	25x75-MN
BL1	25x75-MN	B6	100x200-MN
B1	75x150-MN	T9	25x75-MN
T2	25x75-MN	T10	100x150-MN
B2	75x150-MN	B7	75x150-MN
T3	75x100-MN	T11	25x75-MN
B3	75x150-MN	T12	75x100-MN
T4	25x75-MN	B8	75x100-MN
T5	75x150-MN	T13	25x75-MN
T6	75x150-MN	T14	75x100-MN
B4	100x200-MN	B9	75x150-MN
T7	25x75-MN	B10	100x200-MN
T8	150x200-MN	BR1-1	25x75-MN

- 3 more nail plates were not shown -

Span: 7327	Floor Material: Particle (15.4 kg/m²)	Application: General Areas	All dimensions in millimetres. This drawing should be read in conjunction with Multinail Technical sheets. Wall plates must be placed at supports only.	Marc Houldsworth (TN-016-020)	
Overhang: 0/0	Floor Covering: Std Carpet + Underlay (8 kg/m²)	Live Load: 1.5 kPa		Ver:	Floor 1.9.3
Spacing: 600	Ceiling Material: Plaster 10mm Supa Span (8.2 kg/m²)	Point Load: 1.8 kN		Date:	28/05/2018
Quantity: 3	Ceiling Fixing: Metal direct @ 600c	Design: AS 1720.1-2010		Page:	11 of 20

Client: D'ANDREA	Trusstech SA Pty Ltd 16 High St., Dry Creek, SA 5094 Joist Name: FT6 Type: SJ 400 Joists: FT12	Job No: TT09728
Site: 541 ANZAC GLENELG HWY EAST GLENELG SA 5045 AUS		Weight: 45.50 kg
Ref: DWELLING 2		Total Weight: 45.50 kg
		Laminations: 1



TIMBER / PLATES

Member	Size	Plating	Restraint
BC1	90x35-MGP10 H0 ADS	JD5	600
LEW1	90x35-MGP10 H0 ADS	JD5	
TC1	90x35-MGP10 H0 ADS	JD5	300
W1	90x35-MGP10 H0 ADS	JD5	
W2	90x35-MGP10 H0 ADS	JD5	
W3	90x35-MGP10 H0 ADS	JD5	
BC2	90x35-MGP10 H0 ADS	JD5	600
W4	90x35-MGP10 H0 ADS	JD5	
W5	90x35-MGP10 H0 ADS	JD5	
W6	90x35-MGP10 H0 ADS	JD5	
TC2	90x35-MGP10 H0 ADS	JD5	300
W7	90x35-MGP10 H0 ADS	JD5	
W8	90x35-MGP10 H0 ADS	JD5	


- 17 more members were not shown -

Vertical Reactions at Supports

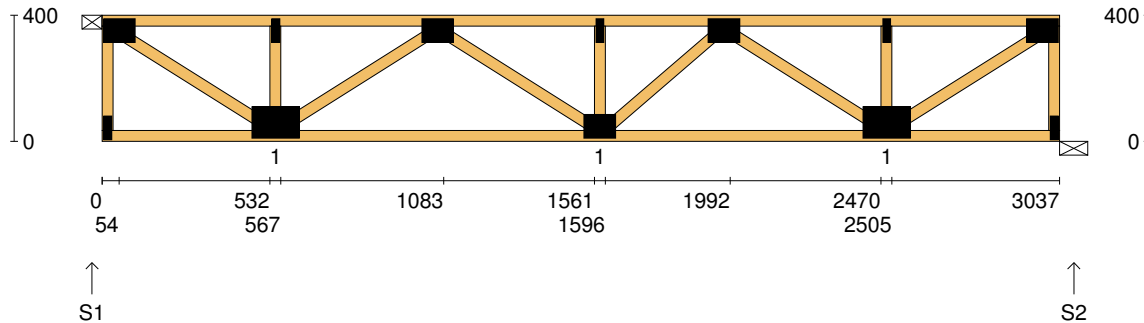
	S1	S2	S3
1.35DL (kN)	0.33	1.50	0.57
1.2DL + 1.5LL (kN)	1.64	7.48	2.81

Joint	Nail Plate	Joint	Nail Plate
T1	75x100-MN	B5	25x75-MN
BL1	25x75-MN	B6	100x200-MN
B1	75x150-MN	T9	25x75-MN
T2	25x75-MN	T10	100x150-MN
B2	75x150-MN	B7	75x150-MN
T3	75x100-MN	T11	25x75-MN
B3	75x150-MN	T12	75x100-MN
T4	25x75-MN	B8	75x100-MN
T5	75x150-MN	T13	25x75-MN
T6	75x150-MN	T14	75x100-MN
B4	100x200-MN	B9	75x150-MN
T7	25x75-MN	B10	100x200-MN
T8	150x200-MN	BR1-1	25x75-MN

- 3 more nail plates were not shown -

Span: 7327	Floor Material: Particle (15.4 kg/m²)	Application: General Areas	All dimensions in millimetres. This drawing should be read in conjunction with Multinail Technical sheets. Wall plates must be placed at supports only.	Marc Houldsworth (TN-016-020)	
Overhang: 0/0	Floor Covering: Std Carpet + Underlay (8 kg/m²)	Live Load: 1.5 kPa		Ver:	Floor 1.9.3
Spacing: 600	Ceiling Material: Plaster 10mm Supa Span (8.2 kg/m²)	Point Load: 1.8 kN		Date:	28/05/2018
Quantity: 1	Ceiling Fixing: Metal direct @ 600c	Design: AS 1720.1-2010		Page:	12 of 20

Client: D'ANDREA	Trusstech SA Pty Ltd 16 High St., Dry Creek, SA 5094	Job No: TT09728
Site: 541 ANZAC GLENELG HWY EAST GLENELG SA 5045 AUS		Weight: 18.74 kg
Ref: DWELLING 2	Joist Name: FT7 Type: SJ 400 Joists: FT14, FT15	Total Weight: 37.48 kg
		Laminations: 1



TIMBER / PLATES


Member	Size	Plating	Restraint
BC1	90x35-MGP10 H0 ADS	JD5	600
LEW1	90x35-MGP10 H0 ADS	JD5	
TC1	90x35-MGP10 H0 ADS	JD5	300
W1	90x35-MGP10 H0 ADS	JD5	
W2	90x35-MGP10 H0 ADS	JD5	
W3	90x35-MGP10 H0 ADS	JD5	
W4	90x35-MGP10 H0 ADS	JD5	
W5	90x35-MGP10 H0 ADS	JD5	
W6	90x35-MGP10 H0 ADS	JD5	
W7	90x35-MGP10 H0 ADS	JD5	
W8	90x35-MGP10 H0 ADS	JD5	
W9	90x35-MGP10 H0 ADS	JD5	
REW1	90x35-MGP10 H0 ADS	JD5	

Vertical Reactions at Supports

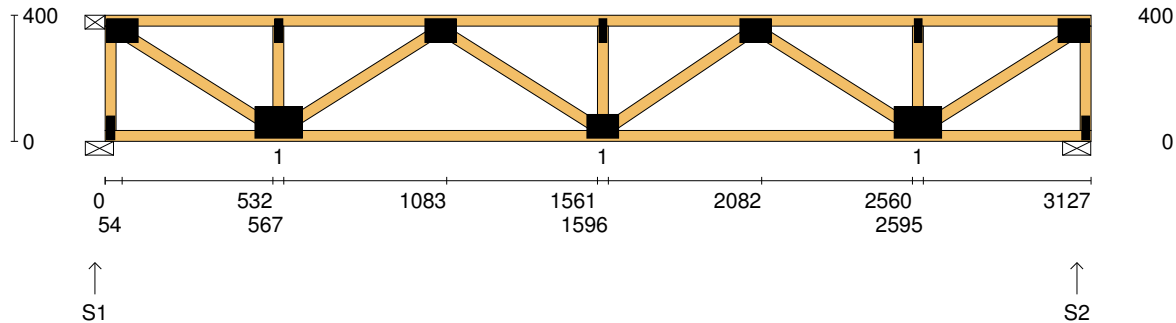
	S1	S2
1.35DL (kN)	0.50	0.50
1.2DL + 1.5LL (kN)	2.47	2.47

Joint Nail Plate

T1	75x100-MN
BL1	25x75-MN
B1	100x150-MN
T2	25x75-MN
T3	75x100-MN
B2	75x100-MN
T4	25x75-MN
T5	75x100-MN
B3	100x150-MN
T6	25x75-MN
BR1	25x75-MN
T7	75x100-MN

Span: 3037	Floor Material: Particle (15.4 kg/m²)	Application: General Areas	All dimensions in millimetres. This drawing should be read in conjunction with Multinail Technical sheets. Wall plates must be placed at supports only.	Marc Houldsworth (TN-016-020)
Overhang: 0/0	Floor Covering: Std Carpet + Underlay (8 kg/m²)	Live Load: 1.5 kPa		Ver: Floor 1.9.3
Spacing: 600	Ceiling Material: Plaster 10mm Supa Span (8.2 kg/m²)	Point Load: 1.8 kN		Date: 28/05/2018
Quantity: 2	Ceiling Fixing: Metal direct @ 600c	Design: AS 1720.1-2010		Page: 13 of 20

Client: D'ANDREA	Trusstech SA Pty Ltd 16 High St., Dry Creek, SA 5094 Joist Name: FT8 Type: SJ 400 Joists: FT16	Job No: TT09728
Site: 541 ANZAC GLENELG HWY EAST GLENELG SA 5045 AUS		Weight: 19.14 kg
Ref: DWELLING 2		Total Weight: 19.14 kg
		Laminations: 1



TIMBER / PLATES


Member	Size	Plating	Restraint
BC1	90x35-MGP10 H0 ADS	JD5	600
LEW1	90x35-MGP10 H0 ADS	JD5	
TC1	90x35-MGP10 H0 ADS	JD5	300
W1	90x35-MGP10 H0 ADS	JD5	
W2	90x35-MGP10 H0 ADS	JD5	
W3	90x35-MGP10 H0 ADS	JD5	
W4	90x35-MGP10 H0 ADS	JD5	
W5	90x35-MGP10 H0 ADS	JD5	
W6	90x35-MGP10 H0 ADS	JD5	
W7	90x35-MGP10 H0 ADS	JD5	
W8	90x35-MGP10 H0 ADS	JD5	
W9	90x35-MGP10 H0 ADS	JD5	
REW1	90x35-MGP10 H0 ADS	JD5	

Vertical Reactions at Supports

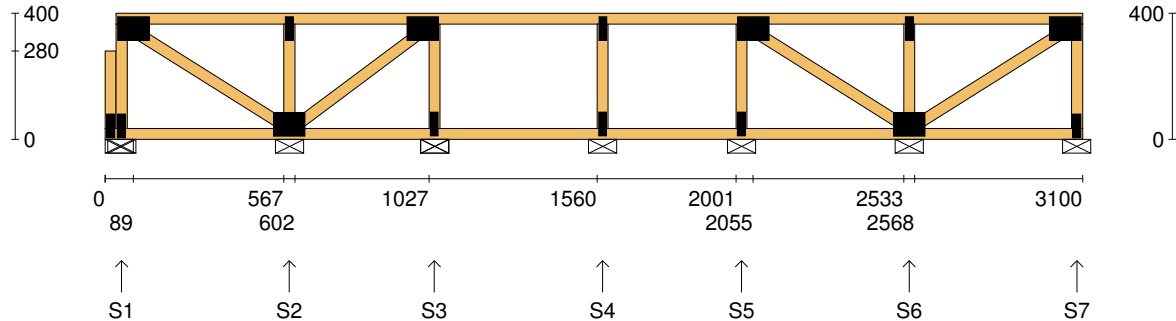
	S1	S2
1.35DL (kN)	0.51	0.51
1.2DL + 1.5LL (kN)	2.54	2.54

Joint Nail Plate

T1	75x100-MN
BL1	25x75-MN
B1	100x150-MN
T2	25x75-MN
T3	75x100-MN
B2	75x100-MN
T4	25x75-MN
T5	75x100-MN
B3	100x150-MN
T6	25x75-MN
BR1	25x75-MN
T7	75x100-MN

Span: 3127	Floor Material: Particle (15.4 kg/m²)	Application: General Areas	All dimensions in millimetres. This drawing should be read in conjunction with Multinail Technical sheets. Wall plates must be placed at supports only.	Marc Houldsworth (TN-016-020)	
Overhang: 0/0	Floor Covering: Std Carpet + Underlay (8 kg/m²)	Live Load: 1.5 kPa		Ver:	Floor 1.9.3
Spacing: 600	Ceiling Material: Plaster 10mm Supa Span (8.2 kg/m²)	Point Load: 1.8 kN		Date:	28/05/2018
Quantity: 1	Ceiling Fixing: Metal direct @ 600c	Design: AS 1720.1-2010		Page:	14 of 20

Client: D'ANDREA	Trusstech SA Pty Ltd 16 High St., Dry Creek, SA 5094 Joist Name: FT9 Type: SJ 400 Ladder Joists: FT17	Job No: TT09728
Site: 541 ANZAC GLENELG HWY EAST GLENELG SA 5045 AUS		Weight: 18.34 kg
Ref: DWELLING 2		Total Weight: 18.34 kg
		Laminations: 1



TIMBER / PLATES


Member	Size	Plating	Restraint
BC1	90x35-MGP10 H0 ADS	JD5	600
LBlock1	90x35-MGP10 H0 ADS	JD5	
LEW1	90x35-MGP10 H0 ADS	JD5	
TC1	90x35-MGP10 H0 ADS	JD5	300
W1	90x35-MGP10 H0 ADS	JD5	
W2	90x35-MGP10 H0 ADS	JD5	
W3	90x35-MGP10 H0 ADS	JD5	
W4	90x35-MGP10 H0 ADS	JD5	
W5	90x35-MGP10 H0 ADS	JD5	
W6	90x35-MGP10 H0 ADS	JD5	
W7	90x35-MGP10 H0 ADS	JD5	
W8	90x35-MGP10 H0 ADS	JD5	
W9	90x35-MGP10 H0 ADS	JD5	

- 1 more member was not shown -

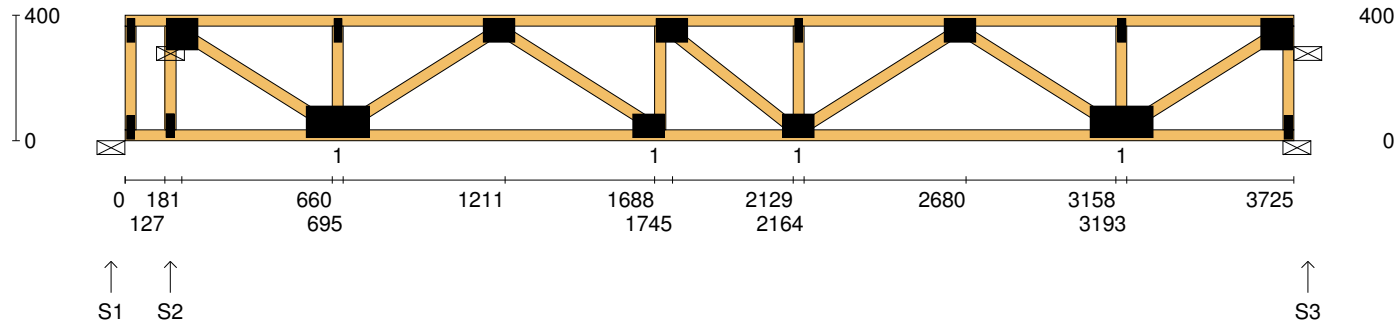
Vertical Reactions at Supports

	S1	S2	S3	S4	S5	S6	S7
1.35DL (kN)	0.07	0.21	0.14	0.15	0.14	0.22	0.07
1.2DL + 1.5LL (kN)	0.31	1.07	0.69	0.81	0.67	1.13	0.30

Joint	Nail Plate	Joint	Nail Plate
BL1-1	25x75-MN	BR1	25x75-MN
T1	75x100-MN	T7	75x100-MN
BL1	25x75-MN		
B1	75x100-MN		
T2	25x75-MN		
T3	75x100-MN		
B2	25x75-MN		
T4	25x75-MN		
B3	25x75-MN		
T5	75x100-MN		
B4	25x75-MN		
B5	75x100-MN		
T6	25x75-MN		

Span: 3100	Floor Material: Particle (15.4 kg/m²)	Application: General Areas	All dimensions in millimetres. This drawing should be read in conjunction with Multinail Technical sheets. Wall plates must be placed at supports only.	Marc Houldsworth (TN-016-020)
Overhang: 0/0	Floor Covering: Std Carpet + Underlay (8 kg/m²)	Live Load: 1.5 kPa		Ver: Floor 1.9.3
Spacing: 600	Ceiling Material: Plaster 10mm Supa Span (8.2 kg/m²)	Point Load: 1.8 kN		Date: 28/05/2018
Quantity: 1	Ceiling Fixing: Metal direct @ 600c	Design: AS 1720.1-2010		Page: 15 of 20

Client: D'ANDREA	Trusstech SA Pty Ltd 16 High St., Dry Creek, SA 5094 Joist Name: FT10 Type: SJ 400 Joists: FT19	Job No: TT09728
Site: 541 ANZAC GLENELG HWY EAST GLENELG SA 5045 AUS		Weight: 23.45 kg
Ref: DWELLING 2		Total Weight: 23.45 kg
		Laminations: 1



TIMBER / PLATES


Member	Size	Plating	Restraint
BC1	90x35-MGP10 H0 ADS	JD5	600
LEW1	90x35-MGP10 H0 ADS	JD5	
TC1	90x35-MGP10 H0 ADS	JD5	300
W1	90x35-MGP10 H0 ADS	JD5	
W2	90x35-MGP10 H0 ADS	JD5	
W3	90x35-MGP10 H0 ADS	JD5	
W4	90x35-MGP10 H0 ADS	JD5	
W5	90x35-MGP10 H0 ADS	JD5	
W6	90x35-MGP10 H0 ADS	JD5	
W7	90x35-MGP10 H0 ADS	JD5	
W8	90x35-MGP10 H0 ADS	JD5	
W9	90x35-MGP10 H0 ADS	JD5	
W10	90x35-MGP10 H0 ADS	JD5	

- 3 more members were not shown -

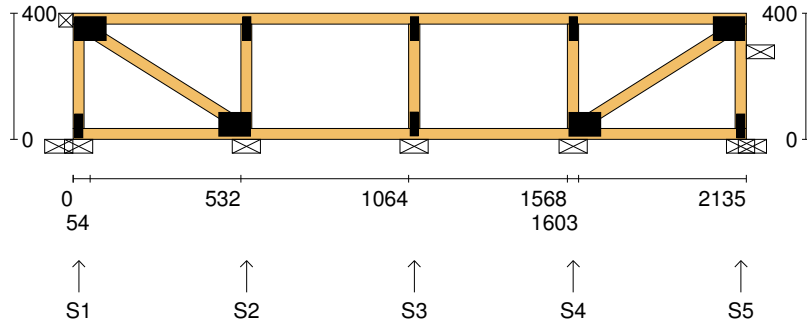
Vertical Reactions at Supports

	S1	S2	S3
1.35DL (kN)	-0.09	0.73	0.59
1.2DL + 1.5LL (kN)	-0.55	3.72	2.91

Joint	Nail Plate	Joint	Nail Plate
TL1	25x75-MN	T7	25x75-MN
BL2	25x75-MN	BR1	25x75-MN
T1	100x100-MN	T8	100x100-MN
B1	25x75-MN		
B2	100x200-MN		
T2	25x75-MN		
T3	75x100-MN		
B3	75x100-MN		
T4	75x100-MN		
B4	75x100-MN		
T5	25x75-MN		
T6	75x100-MN		
B5	100x200-MN		

Span: 3725	Floor Material: Particle (15.4 kg/m²)	Application: General Areas	All dimensions in millimetres. This drawing should be read in conjunction with Multinail Technical sheets. Wall plates must be placed at supports only.	Marc Houldsworth (TN-016-020)	
Overhang: 0/0	Floor Covering: Std Carpet + Underlay (8 kg/m²)	Live Load: 1.5 kPa		Ver:	Floor 1.9.3
Spacing: 600	Ceiling Material: Plaster 10mm Supa Span (8.2 kg/m²)	Point Load: 1.8 kN		Date:	28/05/2018
Quantity: 1	Ceiling Fixing: Metal direct @ 600c	Design: AS 1720.1-2010		Page:	16 of 20

Client: D'ANDREA	Trusstech SA Pty Ltd 16 High St., Dry Creek, SA 5094 Joist Name: FT11 Type: SJ 400 Ladder Joists: FT21	Job No: TT09728
Site: 541 ANZAC GLENELG HWY EAST GLENELG SA 5045 AUS		Weight: 11.87 kg
Ref: DWELLING 2		Total Weight: 11.87 kg Laminations: 1



TIMBER / PLATES


Member	Size	Plating	Restraint
BC1	90x35-MGP10 H0 ADS	JD5	600
LEW1	90x35-MGP10 H0 ADS	JD5	
TC1	90x35-MGP10 H0 ADS	JD5	300
W1	90x35-MGP10 H0 ADS	JD5	
W2	90x35-MGP10 H0 ADS	JD5	
W3	90x35-MGP10 H0 ADS	JD5	
W4	90x35-MGP10 H0 ADS	JD5	
W5	90x35-MGP10 H0 ADS	JD5	
REW1	90x35-MGP10 H0 ADS	JD5	

Vertical Reactions at Supports

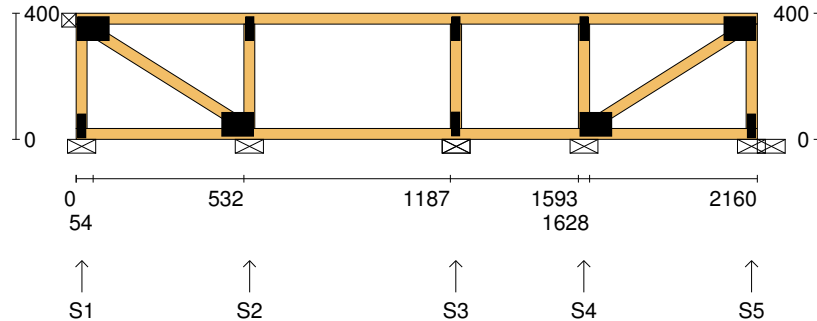
	S1	S2	S3	S4	S5
1.35DL (kN)	0.07	0.20	0.15	0.19	0.07
1.2DL + 1.5LL (kN)	0.33	1.02	0.77	0.99	0.33

Joint Nail Plate

T1	75x100-MN
BL1	25x75-MN
B1	75x100-MN
T2	25x75-MN
T3	25x75-MN
B2	25x75-MN
B3	75x100-MN
T4	25x75-MN
BR1	25x75-MN
T5	75x100-MN

Span: 2135	Floor Material: Particle (15.4 kg/m²)	Application: General Areas	All dimensions in millimetres. This drawing should be read in conjunction with Multinail Technical sheets. Wall plates must be placed at supports only.	Marc Houldsworth (TN-016-020)	
Overhang: 0/0	Floor Covering: Std Carpet + Underlay (8 kg/m²)	Live Load: 1.5 kPa		Ver: Floor 1.9.3	
Spacing: 600	Ceiling Material: Plaster 10mm Supa Span (8.2 kg/m²)	Point Load: 1.8 kN		Date: 28/05/2018	
Quantity: 1	Ceiling Fixing: Metal direct @ 600c	Design: AS 1720.1-2010		Page: 17 of 20	

Client: D'ANDREA	Trusstech SA Pty Ltd 16 High St., Dry Creek, SA 5094 Joist Name: FT12 Type: SJ 400 Ladder Joists: FT23	Job No: TT09728
Site: 541 ANZAC GLENELG HWY EAST GLENELG SA 5045 AUS		Weight: 11.95 kg
Ref: DWELLING 2		Total Weight: 11.95 kg
		Laminations: 1



TIMBER / PLATES


Member	Size	Plating	Restraint
BC1	90x35-MGP10 H0 ADS	JD5	600
LEW1	90x35-MGP10 H0 ADS	JD5	
TC1	90x35-MGP10 H0 ADS	JD5	300
W1	90x35-MGP10 H0 ADS	JD5	
W2	90x35-MGP10 H0 ADS	JD5	
W3	90x35-MGP10 H0 ADS	JD5	
W4	90x35-MGP10 H0 ADS	JD5	
W5	90x35-MGP10 H0 ADS	JD5	
REW1	90x35-MGP10 H0 ADS	JD5	

Vertical Reactions at Supports

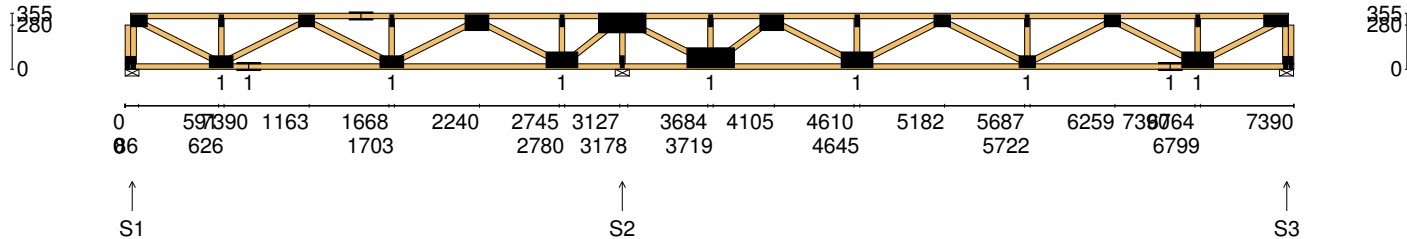
	S1	S2	S3	S4	S5
1.35DL (kN)	0.07	0.22	0.16	0.17	0.08
1.2DL + 1.5LL (kN)	0.30	1.14	0.83	0.86	0.35

Joint Nail Plate

T1	75x100-MN
BL1	25x75-MN
B1	75x100-MN
T2	25x75-MN
T3	25x75-MN
B2	25x75-MN
B3	75x100-MN
T4	25x75-MN
BR1	25x75-MN
T5	75x100-MN

Span: 2160	Floor Material: Particle (15.4 kg/m²)	Application: General Areas	All dimensions in millimetres. This drawing should be read in conjunction with Multinail Technical sheets. Wall plates must be placed at supports only.	Marc Houldsworth (TN-016-020)	
Overhang: 0/0	Floor Covering: Std Carpet + Underlay (8 kg/m²)	Live Load: 1.5 kPa		Ver:	Floor 1.9.3
Spacing: 600	Ceiling Material: Plaster 10mm Supa Span (8.2 kg/m²)	Point Load: 1.8 kN		Date:	28/05/2018
Quantity: 1	Ceiling Fixing: Metal direct @ 600c	Design: AS 1720.1-2010		Page:	18 of 20

Client: D'ANDREA	Trusstech SA Pty Ltd 16 High St., Dry Creek, SA 5094 Joist Name: FT13 Type: SJ 355 Joists: FT24	Job No: TT09728
Site: 541 ANZAC GLENELG HWY EAST GLENELG SA 5045 AUS		Weight: 45.61 kg
Ref: DWELLING 2		Total Weight: 45.61 kg
		Laminations: 1



TIMBER / PLATES

Member	Size	Plating	Restraint
BC1	90x35-MGP10 H0 ADS	JD5	600
LBlock1	90x35-MGP10 H0 ADS	JD5	
LEW1	90x35-MGP10 H0 ADS	JD5	
TC1	90x35-MGP10 H0 ADS	JD5	300
W1	90x35-MGP10 H0 ADS	JD5	
W2	90x35-MGP10 H0 ADS	JD5	
W3	90x35-MGP10 H0 ADS	JD5	
BC2	90x35-MGP10 H0 ADS	JD5	600
W4	90x35-MGP10 H0 ADS	JD5	
TC2	90x35-MGP10 H0 ADS	JD5	300
W5	90x35-MGP10 H0 ADS	JD5	
W6	90x35-MGP10 H0 ADS	JD5	
W7	90x35-MGP10 H0 ADS	JD5	


- 18 more members were not shown -

Vertical Reactions at Supports

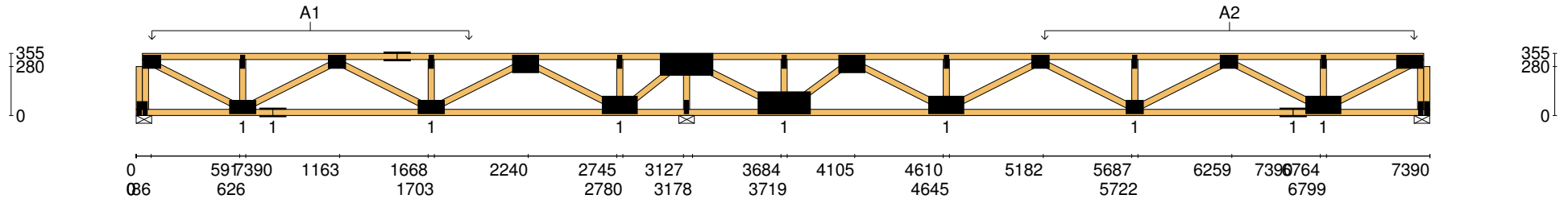
	S1	S2	S3
1.35DL (kN)	0.50	1.75	0.78
1.2DL + 1.5LL (kN)	1.80	7.74	2.99

Joint	Nail Plate	Joint	Nail Plate
BL1-1	25x75-MN	T8	125x300-MN
T1	75x100-MN	B5	25x75-MN
BL1	25x75-MN	B6	125x300-MN
B1	75x150-MN	T9	25x75-MN
T2	25x75-MN	T10	100x150-MN
B2	75x150-MN	B7	100x200-MN
T3	75x100-MN	T11	25x75-MN
T4	75x150-MN	T12	75x100-MN
B3	75x150-MN	B8	75x100-MN
T5	25x75-MN	T13	25x75-MN
T6	100x150-MN	T14	75x100-MN
B4	100x200-MN	B9	75x150-MN
T7	25x75-MN	BR1-1	25x75-MN


- 4 more nail plates were not shown -

Span: 7390	Floor Material: Particle (15.4 kg/m²)	Application: General Areas	All dimensions in millimetres. This drawing should be read in conjunction with Multinail Technical sheets. Wall plates must be placed at supports only.	Marc Houldsworth (TN-016-020)	
Overhang: 0/0	Floor Covering: Std Carpet + Underlay (8 kg/m²)	Live Load: 1.5 kPa		Ver: Floor 1.9.3	
Spacing: 600	Ceiling Material: Plaster 10mm Supa Span (8.2 kg/m²)	Point Load: 1.8 kN		Date: 28/05/2018	
Quantity: 1	Ceiling Fixing: Metal direct @ 600c	Design: AS 1720.1-2010		Page: 19 of 20	

Client: D'ANDREA	Trusstech SA Pty Ltd 16 High St., Dry Creek, SA 5094	Job No: TT09728
Site: 541 ANZAC GLENELG HWY EAST GLENELG SA 5045 AUS		Weight: 45.61 kg
Ref: DWELLING 2	Joist Name: FT13 Type: SJ 355 Joists: FT24	Total Weight: 45.61 kg
		Laminations: 1



User Def. Load	A1 43.50 kg/m ²	A2 43.50 kg/m ²
Applied Load		
DL (kN)		
LL (kN)		
WL Up (kN)		
WL Dn (kN)		

Span: 7390	Floor Material: Particle (15.4 kg/m²)	Application: General Areas	All dimensions in millimetres. This drawing should be read in conjunction with Multinail Technical sheets. Wall plates must be placed at supports only.	Marc Houldsworth (TN-016-020)
Overhang: 0/0	Floor Covering: Std Carpet + Underlay (8 kg/m²)	Live Load: 1.5 kPa		Ver: Floor 1.9.3
Spacing: 600	Ceiling Material: Plaster 10mm Supa Span (8.2 kg/m²)	Point Load: 1.8 kN		Date: 28/05/2018
Quantity: 1	Ceiling Fixing: Metal direct @ 600c	Design: AS 1720.1-2010		Page: 20 of 20